

EPC Solutions in Power



Larsen & Toubro

Larsen & Toubro (L&T) is a multi-billion dollar technology, engineering, construction, projects, manufacturing and financial services conglomerate, with global operations. The company is engaged in core, high-impact sectors – infrastructure, construction, defence, hydrocarbon, heavy engineering, power, aerospace, shipbuilding, mining and metallurgy for customers in over 50 countries. Its integrated capabilities span the entire spectrum of 'design-to-deliver', and it offers turnkey EPC solutions in its major business lines. Its track record covers products, projects and processes executed to international benchmarks. Every aspect of L&T's businesses is characterised by professionalism and high standards of corporate governance. Sustainability is embedded in its long-term strategy for growth. Besides India, the company's manufacturing footprint covers multiple countries. L&T has several international offices, and a supply chain that extends around the globe.

L&T Energy-Power

L&T's capability spectrum covers coal, gas, nuclear and renewable projects. Our expertise encompasses every aspect of design, engineering, manufacture, construction and project management.



L&T Energy-Power head office at Vadodra in Gujarat, India

L&T Energy-Power is a business of Larsen & Toubro, with prowess and experience to integrate L&T's varied offerings in the thermal power sector. It is uniquely positioned to combine rich and diverse strands of experience in engineering, manufacturing and project execution with strong management focus on providing turnkey solutions. In-house strengths are supplemented by collaborations with global leaders in the fields of engineering, technology and manufacturing. The business is also committed to upgrading its skills to meet the challenges of the future.

It has world-class manufacturing facilities at Hazira in Gujarat, India, for ultra-supercritical and supercritical boilers, steam turbines, generators, axial fans, air preheaters, electrostatic precipitators, flue gas desulphurisation (FGD) system and selective catalytic reduction (SCR) system. Its presence includes project management centres at Vadodra (L&T Energy-Power head office) and Faridabad, and multiple project sites in India and overseas.

The business has executed India's first 2x660 MW ultra-supercritical power project on EPC basis for NTPC Limited at Khargone, Madhya Pradesh, and is executing 2x660 MW ultra-supercritical power projects for SJVN Thermal Pvt Ltd at Buxar, Bihar, and THDC India Ltd at Khurja, Uttar Pradesh. L&T is the first Indian company to have set up a 2x700 MW plant with indigenously manufactured supercritical power generation equipment on a complete EPC basis, at Rajpura in Punjab (India). It has also executed major export orders, and is India's first manufacturing entity to have received all four ISO Integrated Management Systems Certification from DNV (ISO 9001, ISO 14001, ISO 45001 and ISO 50001).

For combined cycle power plants (CCPP), the business has experience of partnering with world renowned OEMs viz. General Electric (GE), Siemens, Mitsubishi Heavy Industries, etc, for their advanced class gas turbines. It has executed several CCPP projects in India, Bangladesh, Sri Lanka and Oman, with the largest single site installed capacity of over 1150 MW. L&T is a licensee of John Cockerill for design and manufacturing of heat recovery steam generators (HRSG) with vertical as well as horizontal gas flow designs.



Power equipment making facility at A. M. Naik Heavy Engineering Complex, Hazira

Completed Projects

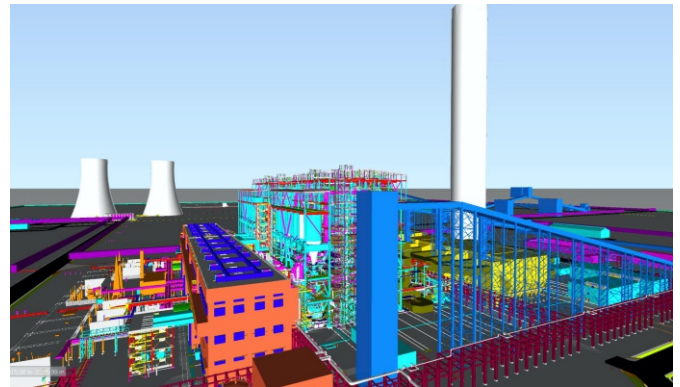
	Project	Fuel	Capacity	Scope
1	NPL 2x700 MW Rajpura TPP, Punjab, India	Coal	1400 MW	EPC
2	Mahagenco 3x660 MW Koradi TPP, Maharashtra, India	Coal	1980 MW	BTG
3	JPVL 2x660 MW Nigrie TPP, Madhya Pradesh, India	Coal	1320 MW	SG + STG
4	APPDCL 2x800 MW Krishnapatnam TPP, Andhra Pradesh, India	Coal	1600 MW	STG
5	MPPGCL 2x660 MW SSTPP, Stage-II, Madhya Pradesh, India	Coal	1320 MW	EPC
6	RRVUNL 2x660 MW Chhabra TPP, Rajasthan, India	Coal	1320 MW	EPC
7	NTPC 2x660 MW Khargone STPP, Madhya Pradesh, India	Coal	1320 MW	EPC
8	NTPC 2x660 MW Tanda Extension TPP, Uttar Pradesh, India	Coal	1320 MW	SG
9	MPPGCL 2x600 MW SSTPP, Stage-I, Madhya Pradesh, India	Coal	1200 MW	BoP
10	DB Power 2x600 MW Raigarh TPP, Chhattisgarh, India	Coal	1200 MW	BoP
11	NWPGCL 410 MW Bheramara CCPP, Bangladesh	Gas	410 MW	EPC
12	BPDB 225 MW Sikalbaha CCPP, Bangladesh	Gas	225 MW	EPC
13	BPDB 400 MW Bibiyana III CCPP, Bangladesh	Gas	400 MW	EPC
14	BPDB 400 MW Bibiyana South CCPP, Bangladesh	Gas	400 MW	EPC
15	GSECL 375 MW Dhuvaran III CCPP, Gujarat, India	Gas	375 MW	EPC
16	GMR 2x384 MW Vemagiri II CCPP, Andhra Pradesh, India	Gas	768 MW	EPC
17	IOCL 238 MW Panipat Cogen Power Plant, Haryana, India	Gas	238 MW	EPC
18	Konaseema EPS Oakwell 445 MW CCPP, Andhra Pradesh, India	Gas	445 MW	EPC
19	GMR 388.5 MW Vemagiri I CCPP, Andhra Pradesh, India	Gas	388.5 MW	EPC
20	Dhofar Power 255 MW Open Cycle Project, Oman	Gas	255 MW	EPC
21	Sojitz Kelanitissa 168 MW CCPP, Sri Lanka	Gas	168 MW	EPC

Ongoing Projects

	Project	Fuel	Capacity	Scope
1	SJVN Thermal Pvt Ltd 2x660 MW Buxar TPP, Bihar, India	Coal	1320 MW	EPC
2	THDCIL 2x660 MW Khurja TPP, Uttar Pradesh, India	Coal	1320 MW	SG
3	NUPPL 3x660 MW Ghatampur TPP, Uttar Pradesh, India	Coal	1980 MW	SG
4	NPCIL 2x700 MW Rawatbhata, Rajasthan, India	Nuclear	1400 MW	BoTi
5	NTPC 2x660 MW Khargone TPP, Madhya Pradesh, India	Coal	1320 MW	FGD
6	NTPC 2x800 MW Lara TPP, Chhattisgarh, India	Coal	1600 MW	FGD
7	NTPC 2x800 MW Darlipali TPP, Odisha, India	Coal	1600 MW	FGD
8	NTPC 6x500 MW & 6x210 MW Vindhyachal TPP, Madhya Pradesh, India	Coal	4260 MW	FGD
9	DVC 2x500 MW Durgapur Steel Power Station, West Bengal, India	Coal	1000 MW	FGD
10	DVC 2x500 MW, 4x210 MW & 2x250 MW Mejia TPP, West Bengal, India	Coal	2340 MW	FGD
11	DVC 2x600 MW Raghunathpur TPP, West Bengal, India	Coal	1200 MW	FGD
12	NPL 2x700 MW Rajpura TPP, Punjab, India	Coal	1400 MW	FGD
13	NLC 2x500 MW Neyveli New TPP, Tamil Nadu, India	Coal	1000 MW	FGD
14	NUPPL 3x660 MW Ghatampur TPP, Uttar Pradesh, India	Coal	1980 MW	FGD

Engineering Capability

L&T-Sargent & Lundy (LTSL) - a joint venture with Sargent & Lundy, USA - is a power-sector engineering and consultancy firm, offering services for over two decades. This entails concept to commissioning including basic and detail engineering, owner's engineering, lender's engineering, RLA and special consulting assignments. The track record includes projects in USA, Saudi Arabia, Oman, UAE, Jordan, China, Thailand, Malaysia, Sri Lanka, Bangladesh and Kenya. Expertise covers gas turbine based projects, coal-based projects and the renewable sector.



3D model of a power plant designed by LTSL

Training & Development



Training and development is a continuous process at L&T Energy-Power with a view to achieving operational excellence. L&T Power Training Institute (PTI) at Vadodara in Gujarat, India, conducts technical training on power plant equipment & systems as well as training related to power

projects for its engineers and its joint venture partners. Training is also provided to customer personnel on various aspects of power projects. PTI plans, designs, develops and conducts technical training programmes: in-house, on-site and on-the-job. The aim is to impart in-depth knowledge in specific areas of the power industry to its technical personnel, enabling enhanced efficiency of operation.

L&T Institute of Project Management (IPM) is a seat of higher learning based at Vadodara, and Chennai in Tamil Nadu, India. It focuses on enhancing project management competency of project personnel.

IPM is a registered educational provider (REP ID: 3267) of PMI, USA. The pedagogy is based on the premise that practitioners bring in more value in classroom teaching. Based on this premise, almost all the faculty members of IPM have earlier been practising managers.

India Office

Larsen & Toubro Limited

L&T Energy-Power
L&T Knowledge City, Gate No. 1
NH-8, Ajwa-Waghodia Crossing
Vadodara - 390019, Gujarat, India
Tel: +91 265 2454726
Email: arup.bhattacharya@Lntpower.com
dk.singh@Lntpower.com

UAE Office

Larsen & Toubro Limited

L&T Energy-Power
6th Floor, Sheikh Abdulla Building
Al Qasimiya Street, Al Mahatta
P.O. Box - 63671, Sharjah, UAE
Tel: +971 6 5172967
Email: shouab.zahid@Larsentoubro.com

Bangladesh Office

Larsen & Toubro Limited

L&T Energy-Power
8th Floor, Crystal Palace
SE(D) 22, Road 140
Gulshan South Avenue
Gulshan - 1, Dhaka - 1212
Bangladesh
Tel: +880 9617171133
Email: arindam.dasgupta@Lntpower.com

Regd. Office

Larsen & Toubro Limited

L&T House, N. M. Marg, Ballard Estate, Mumbai - 400 001, INDIA
CIN: L99999MH1946PLC004768



A brand of Larsen & Toubro Limited