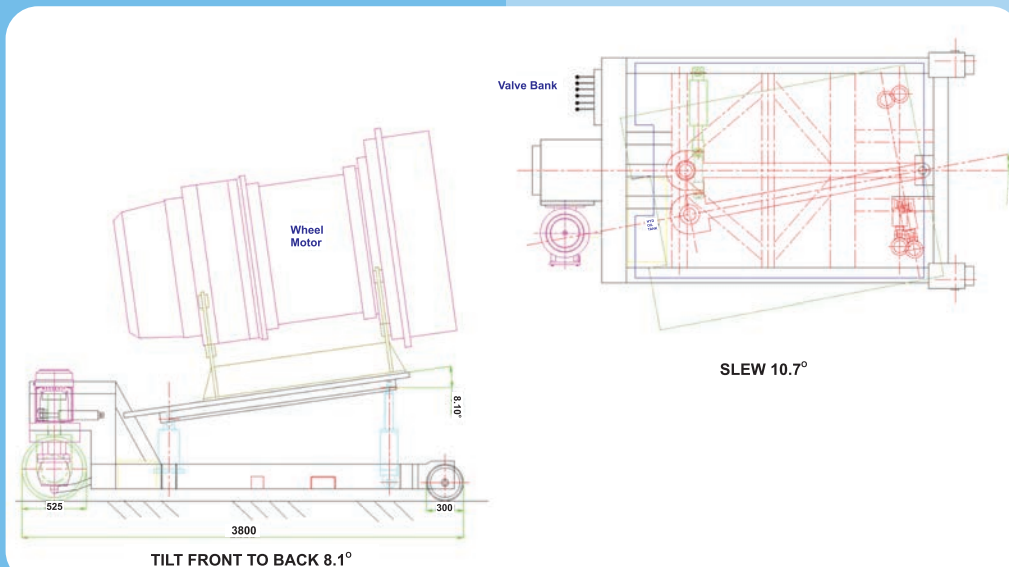
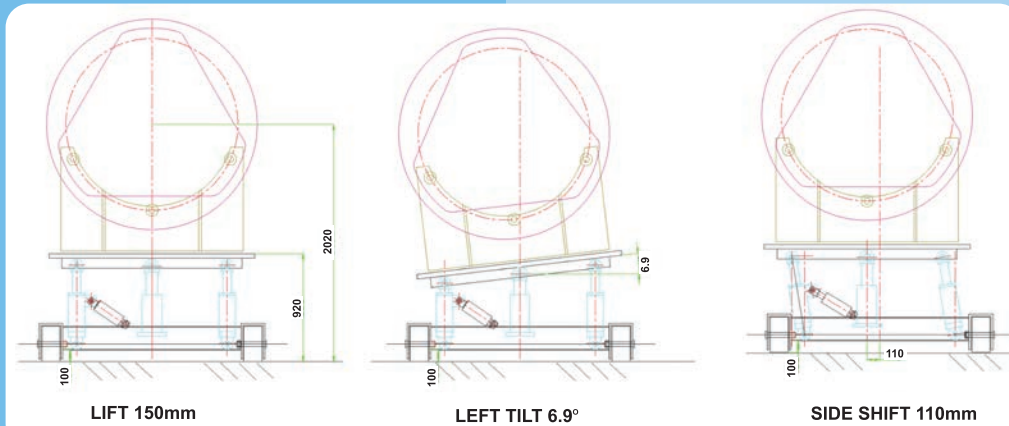
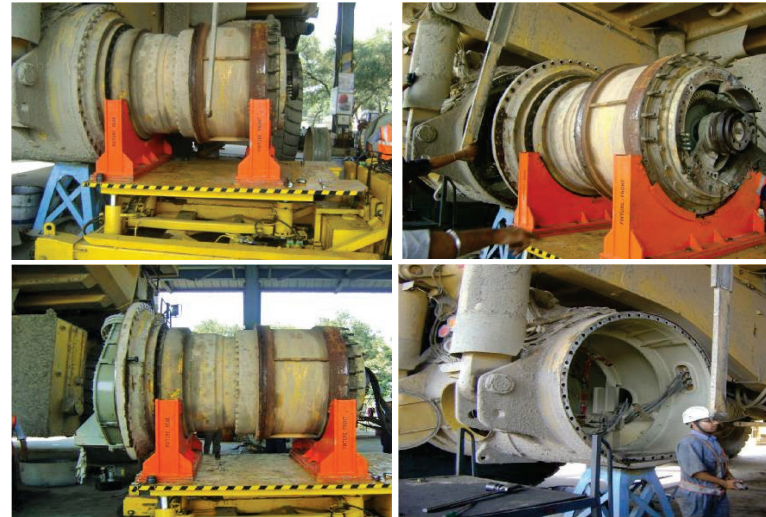


FUNCTIONS



OPERATIONS

Removal of Dump Truck Wheel Motor by using Wheel Dolly



Fitment of Wheel Motor by using Wheel Motor Dolly



WHEEL DOLLY WD-12T
Variable Work Table



L&T Construction Equipment Limited

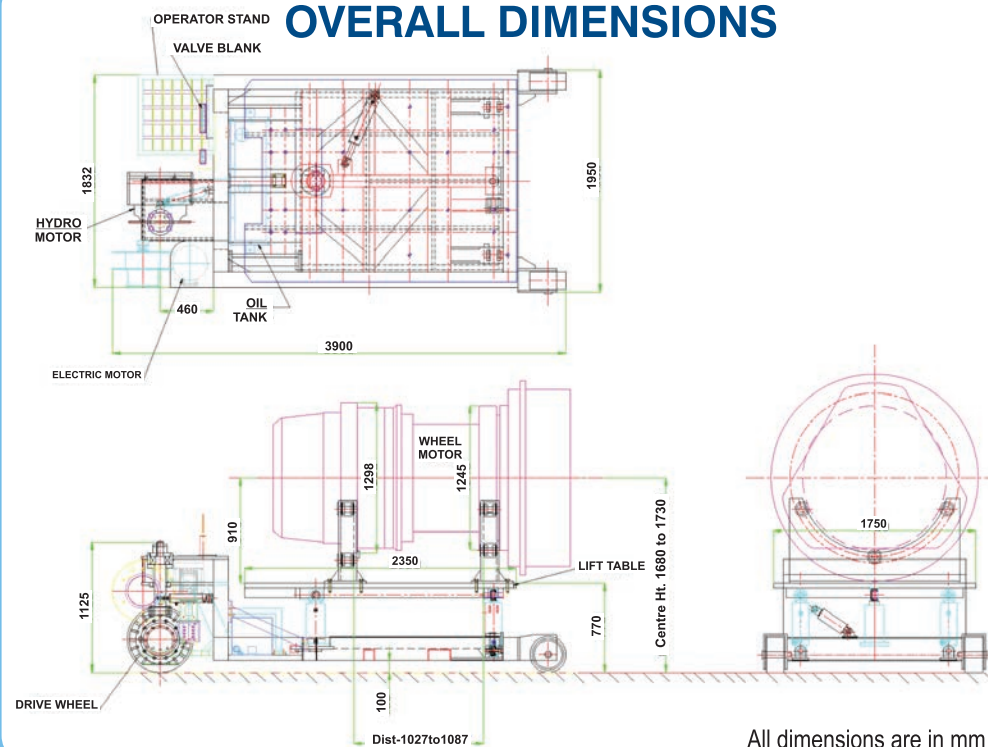
Marketing - Hydraulics Products, Bellary Road, Byatarayanapura,
Bangalore - 560 092, India, Tel. +91 80 2216 5176, Fax. +91 80 2363 6065
E-mail. shailesh.kodkani@larsentoubro.com

The Wheel Dolly WD-12T is a versatile self-propelled variable work table designed and manufactured by L&T Hydraulics at its state-of-the-art manufacturing facility in Bengaluru, India. It provides users the flexibility to handle and position a range of components and sub-assemblies on large earthmoving equipment.

The WD-12T is hydraulically operated and can safely handle loads upto 12 tons. It can lift, tilt, slew and side shift the loads for accurate positioning during assembly and disassembly of components. It is powered by a 3 phase, TEFC squirrel cage electric motor and uses a winding drum and trailing cable for moving in the workshop.

The work table of WD-12T is pre-drilled to fit customer specific fixtures to mount the components and sub-assemblies.

OVERALL DIMENSIONS



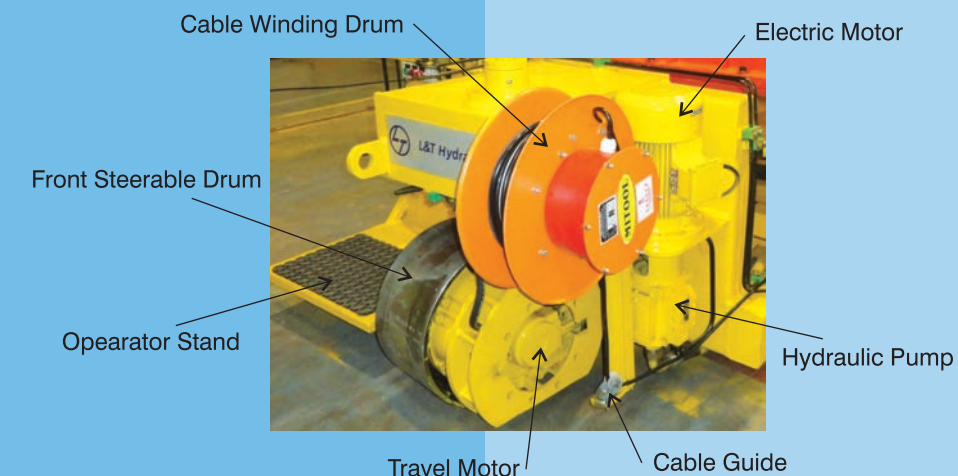
FEATURES

- ▶ Designed for safe and precise positioning of components wheel motors, armatures, etc. during assembly / disassembly
- ▶ Environment friendly - Powered by electric motor
- ▶ Smooth operations - Hydraulic system for all functions viz.:
 - Lift & Tilt
 - Slew & Side Shift
 - Propulsion & Steering
- ▶ Easy to operate - Conveniently positioned & user friendly controls
- ▶ Safety features:
 - Cylinders designed for high pressure with load holding valves
 - Propel motors with inbuilt failsafe parking brake
 - Self winding trailing cable drum
 - Sturdy table with 40 mm thick plate for jig mounting
- ▶ Additional control valve - for powering auxiliary tools / attachments

SPECIFICATIONS

- ▶ Overall dimension: 1950 W X 3900 L X 1125 H mm
- ▶ Table size : 1750 W X 2350 L X 40 H mm
- ▶ Max working load : 12000 Kg
- ▶ Electric motor power : 7.5 KW
- ▶ Tare weight : 3.6 Ton
- ▶ Ground clearance : 100 mm
- ▶ Functions:
 - Lift: Max 150 mm
 - Tilt (Front / Back) : 8.1° from horizontal plane
 - Tilt (Left / Right) : 6.9° from horizontal plane
 - Slew (Left / Right) : 10.7° from axis
 - Side shift (Right): 110 mm from centre
 - Closed height (Table lowered) : 770 mm
- ▶ Propel speed: Slow - 0 to 0.35 Km/h
Fast - 0 to 0.70 Km/h

SUB-ASSEMBLIES



CONTROLS

