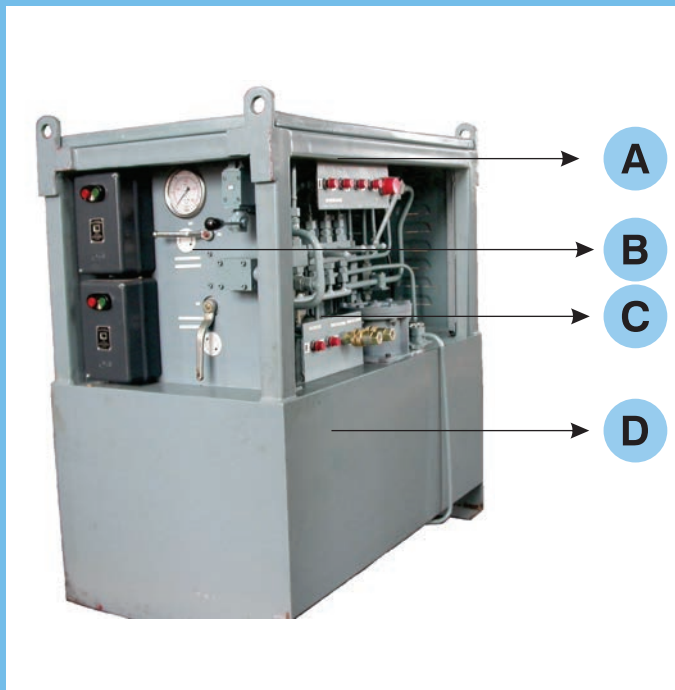


FEATURES – POWER PACKS



- A. Single acting cylinder header
- B. Compact operator panel with:
 - Single lever operation for all cylinders
 - Pressure setting point ▸ Gauge ▸ Motor Starter
- C. Auxiliary output - For double acting cylinder operation with:
 - Single lever operation ▸ Gauge
- D. Hydraulic Tank - Robust & sized with adequate reserve fluid

- Three stage fall back:
- Stand by electric motor (optional)
 - Manual operated pump
 - External feed from other matching sources

Safety
 Electrical: Over current protection
 Hydraulic: Direct acting adjustable relief valve
 NOTE: Power packs can also be tailored to suit specific customer requirement

SPECIFICATIONS

POWER PACK

Dimension	With single electric motor pump unit	With standby electric motor pump unit
L x B x H (in mm)	830 X 600 X 1032	1000 X 600 X 995
Component	Specification & Quantity	
	With single electric motor pump unit	With standby electric motor pump unit
Electric Motor	5 HP 3 phase 415 VAC 3Phase, 50 Hz Induction Motor protected by DOL starter - 01 No	5 HP, 3 phase 415 VAC 3Phase, 50 Hz Induction Motor protected by DOL starter - 02 No
Main Pump	Submerged fixed displacement pump Flow: 12 LPM @ 1450 RPM - 01 No.	Submerged fixed displacement pump Flow:12 LPM @ 1450 RPM - 02 Nos
Emergency Pump	Manual operated 13 CC/Double Stroke -1 No	Manual operated 13 CC /Double Stroke - 1 No
Hydraulic tank	150 Ltrs - 1 No	180 Ltrs - 1 No
Return line Filter	10 Micron by pass type paper element - 1 No	10 Micron by pass type paper element - 1 No
Gauge	100mm glycerin filled 0 to 250Bar -1 No	100mm glycerin filled 0 to 250Bar - 1 No
Output header (Main- for slip form jack)	¾" BSP - 4 Nos 1" BSP - 1 No (Regulated by HP ball valves)	¾" BSP -4 Nos 1" BSP - 1 No (Regulated by HP ball valves)
Output Header (Auxiliary - for double acting cylinder)	¾" BSP output & return operated by manually operated DC valve (Max flow: 12 LPM at 90Bar)	¾" BSP output & return operated by manually operated DC valve (Max flow: 24 LPM at 90Bar)
Input Header	½" Quick coupler	½" Quick coupler

CUSTOMER FOCUS AND QUALITY ASSURANCE



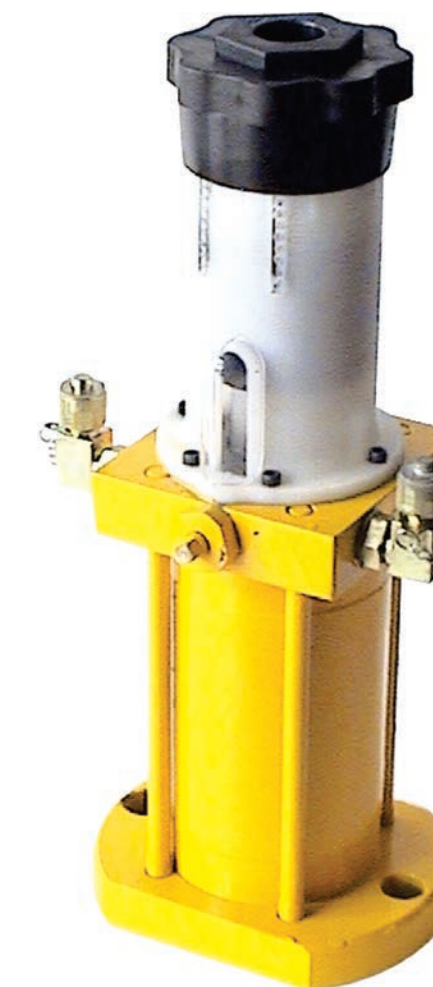
3.5 TON JACK UNDER TESTING

The components of the jacks undergo stringent quality tests before final acceptance.

The product has been validated after passing rigorous accelerated tests to match the desired performance in slip form construction.

Our jacks and hydraulic systems have performed and met customer's expectations of safety and minimal downtime.

A team of trained service personnel are on call to handle service requirements both at customer's site and at our service stations. Customers have been immensely benefitted by our application engineering support for hydraulic systems used in diverse application.



Reliable and Efficient Hydraulics for Construction Sector



L&T Construction Equipment Limited

Marketing - Hydraulics Products, Bellary Road, Byatarayanapura, Bangalore - 560 092. India, Tel. +91 80 2216 5100, Fax. +91 80 2363 6065
 E-mail. shailesh.kodkani@larsentoubro.com

Marketing – Hydraulic Products, TC1 Building, 2nd Floor, ECC Campus Mount Poonamallee Road, Manapakkam, Chennai - 600 089 Tel: +91 44 22706865
 Email: sanjaybk@larsentoubro.com

Marketing – Hydraulic Products, 38, Shakespeare Sarani, Kolkata 700 071
 Tel: +91 33 22827522, Fax. +91 33 22827587
 Email: avik.haldar@larsentoubro.com

TELESCOPIC JACK & POWER PACK FOR TILTING TABLE



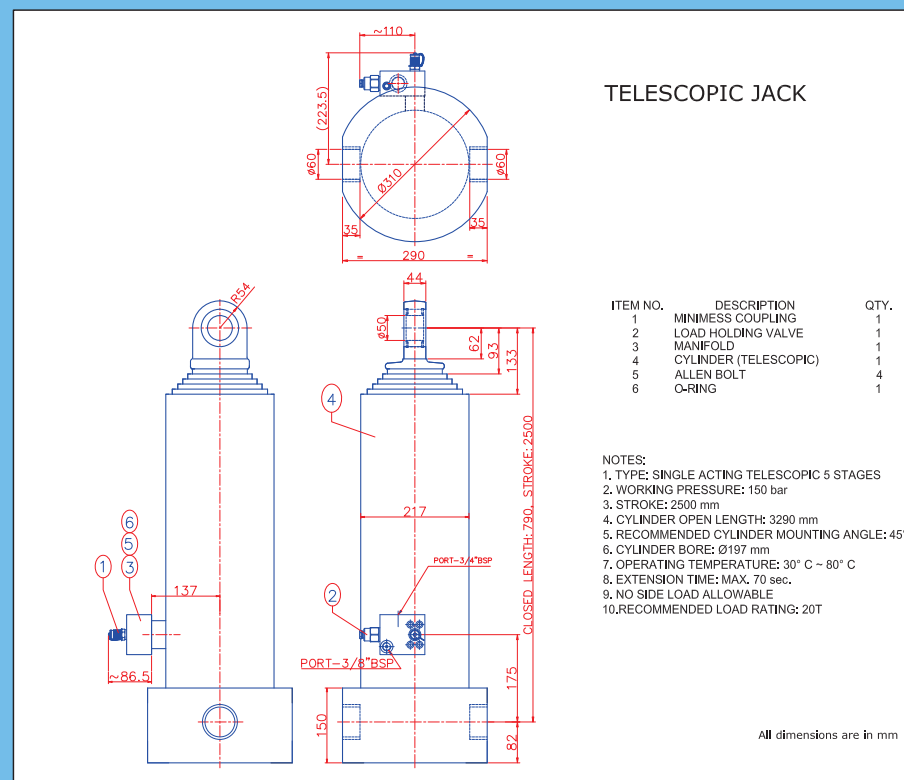
Pre-fabrication technology for walls, ceilings, floorings, etc. is now being increasingly used for construction of mass housing projects. This technology not only helps in faster execution of the projects but is also economical.

The pre-fabricated structures are cast on a moulding table, and the table is then tilted after curing, to safely remove the cast structure.

L&T Hydraulics has developed a hydraulic system along with telescopic cylinders to carry out the table tilting operation. The hydraulic system and the cylinder are tailored to suit the lifting capacity of different sizes of tilting tables required by the customer.

Usage of a hydraulic system for tilting operation offers the following advantages as compared to conventional methods of tilting:

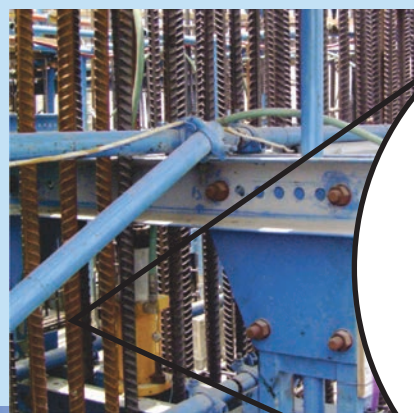
- Faster cycle time and consequent increase in through-put
- Ease of operation and safety of operating personnel
- Load holding without creeping for an extended period of time
- Designed to safely hold the load in an event of pipe/hose rupture.
- Smooth functioning ensures that the pre-fabricated structure is not damaged
- Single hydraulic system can be designed to operate multiple tables
- One operator can control the functioning of multiple tables



The hydraulic system and the hydraulic cylinders are manufactured at the state-of-the-art manufacturing plant of L&T Hydraulics in Bengaluru, India.

L&T Hydraulics also offers end-to-end solutions in application engineering, design, manufacture, installation, commissioning and after sales support for the hydraulic systems.

SLIPFORM JACK & POWER PACK



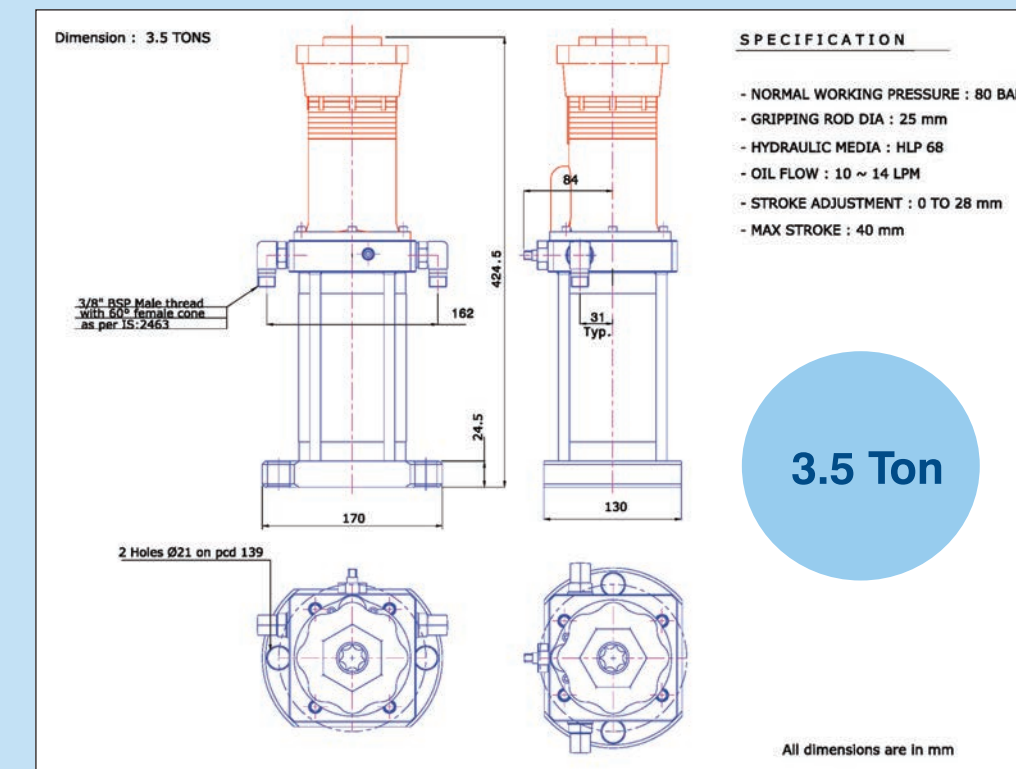
THE POWER BEHIND SLIPFORM CONSTRUCTION

L&T Hydraulics markets and supports a wide range of high pressure hydraulic products, hydrostatic transmissions and customized hydraulic systems. The hydraulic products are manufactured at the state-of-the-art manufacturing facility of L&T Hydraulics in Bengaluru, India.

We offer the following products for slipform construction:

- 3.5 Ton Jack
- 6.2 Ton Jack
- 5.0 HP Power Pack

FEATURES - SLIPFORM JACKS



A. STROKE LIMITER

- Simple mechanism to adjust the stroke
- Grips the climbing rod without slippage
- Visual indication for piston movement

B. BALL CATCH

C. STROKE INDICATOR

D. SEALING

- Withstand peak pressures and prevents entry of abrasive concreting debris
- Fatigue resistant to endure repeated reversals

E. SPRING

F. MOUNTING

- Simple and robust mounting for quick assembly and removal (Not in our scope of supply)

G. CLIMBING ROD

